

| | | | |
|--|---|--|-------------------------------------|
| CONSTRUCTION STRUCTURE STRUKTUR STRUCTUUR | Minituft 5/64" loop pile Minituft 5/64" bouclé Minituft 5/64" Schlinge Minituft 5/64" lussenpool | STAIR SUITABILITY ESCALIERS TREPPENEIGNUNG TRAPPENGESCHIKTHEID | EN 1963 A: intensive use |
| PILE MATERIAL COMPOSITION DU VELOURS POLMATERIAL POOLMATERIAAL | 100% Econyl® yarn, regenerated solution dyed nylon | PERMANENTLY ANTISTATIC ANTISTATIQUE PERMANENT PERMANENT ANTISTATISCH PERMANENT ANTISTATISCH | ISO 6356 < 2 kV |
| PRIMARY BACKING SUPPORT TRÄGERMATERIAL TUFTDOEK | non woven PES PES non tissé PES Vlies PES vilt | IMPACT NOISE RATING ISOLATION PHONIQUE TRITTSCHALLVERBESSERUNG GELUIDSISOLATIE | ISO 140-8 18 dB ΔLw |
| SECONDARY BACKING DOSSIER RÜCKEN TAPIJTRUG | Action Back | SOUND ABSORPTION ABSORPTION PHONIQUE SCHALLABSORPTIONSGRAD | ISO 354 0,15 αw |
| PILE WEIGHT POIDS DU VELOURS POLEINSATZGEWICHT POOLGEWICHT | Ca. 640 gr/m ² | THERMAL RESISTANCE RÉSISTANCE THERMIQUE WÄRMEDURCHLASSWIDERSTAND WARMTEDOORLAATWEERSTAND | ISO 8302 0,05 m ² K/W |
| TOTAL WEIGHT POIDS TOTAL GESAMTGEWICHT TOTAAL GEWICHT | Ca. 2.856 gr/m ² | FASTNESS TO LIGHT SOLIDITÉ A LA LUMIÈRE LICHTECHTHEIT LICHTECHTHEID | ISO 105-B02 ≥ 7 |
| PILE HEIGHT EPAISSEUR DU VELOURS POLHÖHE POOLHOOGTE | Ca. 1 mm | COLOUR FASTNESS TO WATER SOLIDITÉ À L'EAU WASSERRECHTHEIT WATERRECHTHEID | EN ISO 105-E01 ≥ 4-5 |
| TOTAL HEIGHT EPAISSEUR TOTAL GESAMTHÖHE TOTALE DIKTE | Ca. 5,3 mm | FIRE RESISTANCE COMPORTEMENT AU FEU BRENNVERHALTEN BRANDGEDRAG | EN 13501-1 Cfl-s1 if glued |
| TUFT DENSITY NOMBRES DE POINTS NOPPENZAHL AANTAL PUNTEN | Ca. 200.000/m ² | RUBBING FASTNESS SOLIDITÉ AU FROTTEMENT REIBECHTHEIT WRIJFECHTHEID | EN ISO 105-X12 ≥ 4 |
| PILE DENSITY DENSITÉ DU VELOURS POLROHDICHTE POOLDICHTHEID | Ca. 0,215 g/cm ³ | NUMBER OF COLOURS NOMBRES DE COULEURS ANZAHL FARBEN AANTAL KLEUREN | 9 |
| CLASSIFICATION CLASSEMENT KLASSIFIKATION CLASSIFICATIE | EN 1307 33 - LC1 | WIDTH LARGEUR BREITE BREEDTE | EN ISO 3018 ca. 400 cm |
| CASTOR CHAIR SUITABILITY CHAISE À ROULETTES STUHLROLLENEIGNUNG ROLSTOELGESCHIKTHEID | EN 985 A: intensive use | | |



EN14041
CE
19
ITC CO BV
Kanegemstraat 15 - BE 8700 Tielt
DOP: 1011#IE0ACV
Textile Floor Covering EN1307
Notified body 2401
my.itc-carpets.com

EAC



ECONYL®
ENDLESS POSSIBILITIES

REG. NR
37F3BF8B
www.pro-dis.info

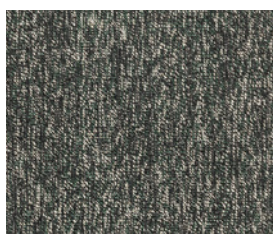




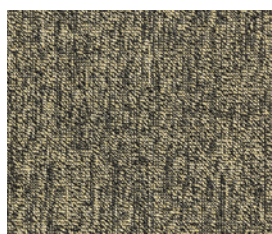
▲ 399



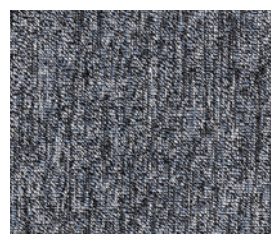
▲ 831



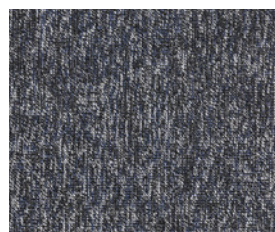
▲ 668



▲ 270



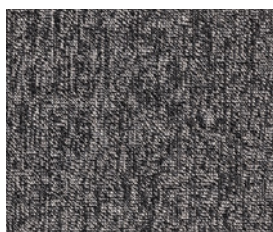
▲ 963



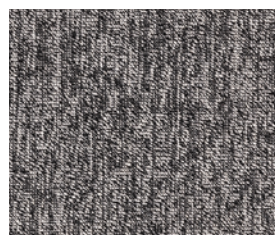
▲ 553



▲ 990



▲ 961



▲ 907