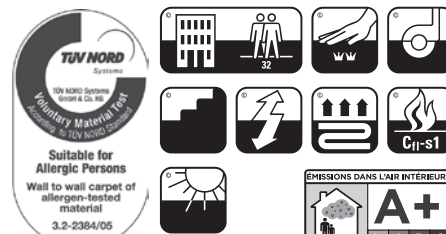


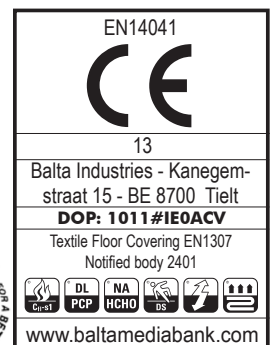
<b>CONSTRUCTION</b>	Tufting 1/10" cut pile COC	<b>PERMANENTLY ANTISTATIC</b>	ISO 6356
<b>STRUCTURE</b>	Tufté 1/10" velours COC	<b>ANTISTATIQUE PERMANENT</b>	< 2 kV
<b>STRUKTUR</b>	Getuftet 1/10" COC-Velours	<b>PERMANENT ANTISTATISCH</b>	
<b>STRUCTUUR</b>	Getuft 1/10" velours COC	<b>PERMANENT ANTISTATISCH</b>	
<b>PILE MATERIAL</b>	100% PA 6 IMPREL®	<b>IMPACT NOISE RATING</b>	ISO 140-8
<b>COMPOSITION DU VELOURS</b>		<b>ISOLATION PHONIQUE</b>	24 dB ΔLw
<b>POLMATERIAL</b>		<b>TRITTSCHALLVERBESSERUNG</b>	
<b>POOLMATERIAAL</b>		<b>GELUIDSISOLATIE</b>	
<b>PRIMARY BACKING</b>	Woven PP	<b>SOUND ABSORPTION</b>	ISO 354
<b>SUPPORT</b>	PP tissé	<b>ABSORPTION PHONIQUE</b>	0.20 αw
<b>TRÄGERMATERIAL</b>	Bändchengewebe PP	<b>SCHALLABSORPTIONSGRAD</b>	
<b>TUFTDOEK</b>	Geweven PP	<b>GELUIDSABSORPTIE</b>	
<b>SECONDARY BACKING</b>	Action Back	<b>THERMAL RESISTANCE</b>	ISO 8302
<b>DOSSIER</b>		<b>RÉSISTANCE THERMIQUE</b>	0.10 m² K/W
<b>RÜCKEN</b>		<b>WÄRMEDURCHLASSWIDERSTAND</b>	
<b>TAPIJTRUG</b>		<b>WARMTEDOORLAATWEERSTAND</b>	
<b>PILE WEIGHT</b>	Ca. 730 gr/m²	<b>FASTNESS TO LIGHT</b>	ISO 105-B02
<b>POIDS DU VELOURS</b>		<b>SOLIDITÉ A LA LUMIÈRE</b>	≥ 5-6
<b>POLEINSATZGEWICHT</b>		<b>LICHTECHTHEIT</b>	
<b>POOLGEWICHT</b>		<b>LICHTECHTHEID</b>	
<b>TOTAL WEIGHT</b>	Ca. 1.730 gr/m²	<b>COLOUR FASTNESS TO WATER</b>	EN ISO 105-E01
<b>POIDS TOTAL</b>		<b>SOLIDITÉ À L'EAU</b>	≥ 4-5
<b>GESAMTGEWICHT</b>		<b>WASSERECHEITHEIT</b>	
<b>TOTAAL GEWICHT</b>		<b>WATERECHTHEID</b>	
<b>PILE HEIGHT</b>	Ca. 4 mm	<b>FIRE RESISTANCE</b>	EN 13501-1
<b>EPAISSEUR DU VELOURS</b>		<b>COMPORTEMENT AU FEU</b>	Cfl-s1 (if glued)
<b>POLHÖHE</b>		<b>BRENNVERHALTEN</b>	
<b>POOLHOOGTE</b>		<b>BRANDGEDRAG</b>	
<b>TOTAL HEIGHT</b>	Ca. 6 mm	<b>RUBBING FASTNESS</b>	EN ISO 105-X12
<b>EPAISSEUR TOTAL</b>		<b>SOLIDITÉ AU FROTTEMENT</b>	≥ 4
<b>GESAMTHÖHE</b>		<b>REIBECHTHEIT</b>	
<b>TOTALE DIKTE</b>		<b>WRIJFECHTHEID</b>	
<b>TUFT DENSITY</b>	Ca. 225 000/m²	<b>NUMBER OF COLOURS</b>	21
<b>NOMBRES DE POINTS</b>		<b>NOMBRES DE COULEURS</b>	
<b>NOPPENZAHL</b>		<b>ANZAHL FARBEN</b>	
<b>AANTAL PUNTEN</b>		<b>AANTAL KLEUREN</b>	
<b>PILE DENSITY</b>	Ca. 0.111 g/cm³	<b>WIDTH</b>	EN ISO 3018
<b>DENSITÉ DU VELOURS</b>		<b>LARGEUR</b>	ca. 400 cm (21 colours)
<b>POLROHDICHTHEIT</b>		<b>BREITE</b>	ca. 500 cm (12 colours)
<b>POOLDICHTHEID</b>		<b>BREEDTE</b>	
<b>CLASSIFICATION</b>	EN 1307		
<b>CLASSEMENT</b>	32 - LC2		
<b>KLASSIFIKATION</b>			
<b>CLASSIFICATIE</b>			
<b>UPEC</b>	U3 P3 E1 C0 Certification CSTB:09/261		
<b>CASTOR CHAIR SUITABILITY</b>	EN 985		
<b>CHAISE À ROULETTES</b>	A: intensive use		
<b>STUHLROLLENEIGNUNG</b>			
<b>ROLSTOELGESCHIKTHEID</b>			
<b>STAIR SUITABILITY</b>	EN 1963		
<b>ESCALIERS</b>	A: intensive use		
<b>TREPPENEIGNUNG</b>			
<b>TRAPPENGESCHIKTHEID</b>			



UPEC

REG. NR  
**4F6BE834**

www.pro-dis.info



# fortesse SDE new AB



▲ 144 4 & 5 m



▲ 17 4 m



▲ 40 4 & 5 m



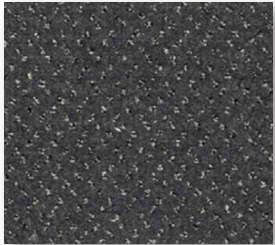
▲ 12 4 & 5 m



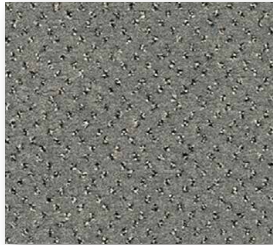
▲ 138 4 m



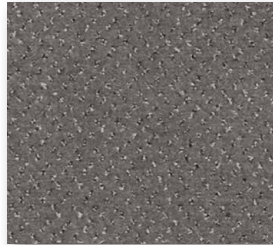
▲ 64 4 m



▲ 197 4 & 5 m



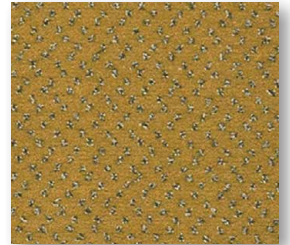
▲ 90 4 & 5 m



▲ 94 4 & 5 m



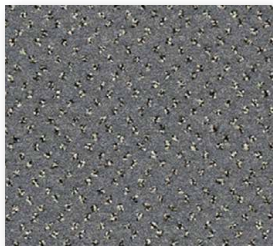
▲ 39 4 & 5 m



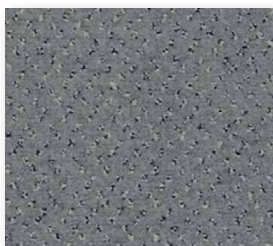
▲ 53 4 m



▲ 299 4 m



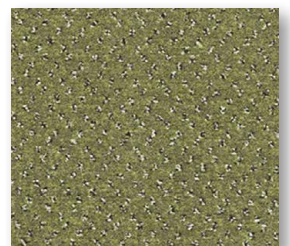
▲ 96 4 & 5 m



▲ 93 4 & 5 m



▲ 173 4 & 5 m



▲ 123 4 m



▲ 178 4 m



▲ 177 4 & 5 m



▲ 174 4 m



▲ 276 4 & 5 m



▲ 24 4 m